

# CLESTA

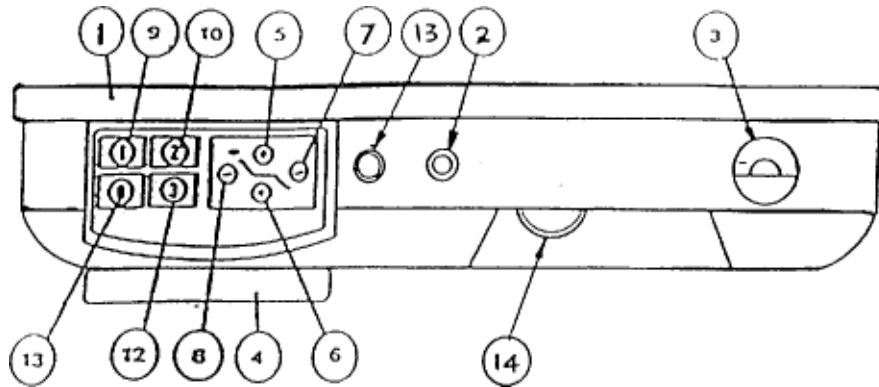
**DENTAL UNIT**

CLESTA 'IC' M

CLESTA 'IC' MC

## INSTALLATION and OPERATION INSTRUCTIONS

 **Belmont**

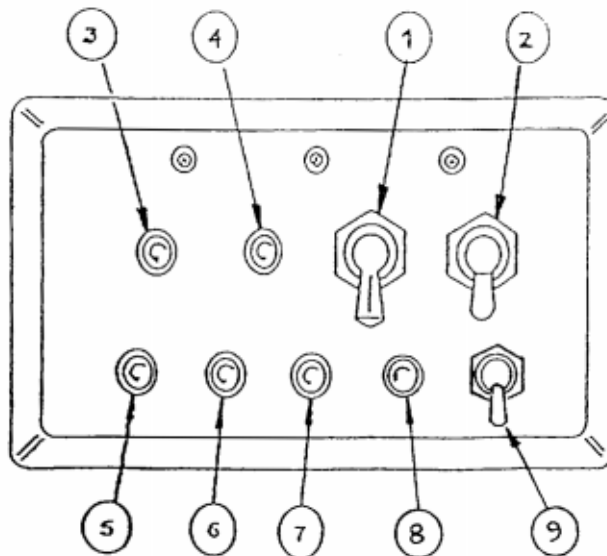


SERVICE TRAY  
 PILOT INDICATOR  
 PRESSURE GAUGE  
 TRAY HANDLE  
 SEAT RAISING SW.

SEAT LOWERING SW.  
 BACKREST RAISING SW.  
 BACKREST RECLINING SW.  
 PRESET - 1 SWITCH  
 PRESET - 2 SWITCH

PRESET - 3 SWITCH  
 (OR LAST POSITION)  
 AUTO RETURN SW.  
 LED INDICATOR FOR  
 FIBRE OPTIC ON/OFF  
 (OPTIONAL EXTRA)  
 POWER CONTROL FOR  
 CAVITRON  
 (OPTIONAL EXTRA)

(FIG.1 FRONT CONTROL PANEL)



H/P FLUSH OUT SWITCH  
 MAIN SWITCH  
 SYRINGE WATER NEEDLE VALVE  
 SYRINGE AIR NEEDLE VALVE

H/P -1 WATER NEEDLE VALVE  
 H/P -2 WATER NEEDLE VALVE  
 H/P -3 WATER NEEDLE VALVE  
 WATER CONTROL FOR CAVITRON  
 (OPTIONAL EXTRA)  
 ON/OFF SWITCH FOR FIBRE OPTIC  
 (OPTIONAL EXTRA)

(FIG.2 MAIN SWITCH PANEL)

NOTE: Optional extras come factory fitted when either (or both)  
 Cavitron & Fibre Optics are fitted by Belmont.

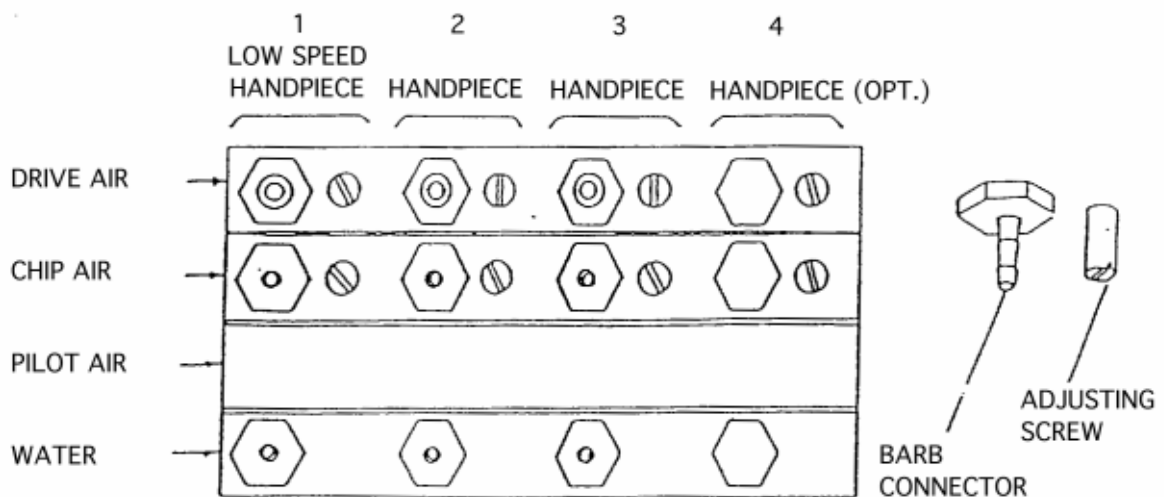
(A) HANDPIECE DRIVE AND CHIP AIR CONTROL (FIG.4)

Take retaining tray top & screws and open top tray. Control of air to each handpiece is provided by the screws below the instrument tray (see FIG.4) The screws should be adjusted slowly. It is important to set the air pressure to that indicated by handpiece manufacturer.

SETTING THE OPTIMUM CONDITION

Turn the appropriate Drive Air Screw fully clockwise, operate Drive air foot pedal to fully open (maximum foot pressure) and turn the adjusting screw slowly in anti-clockwise direction (counter clockwise).

Stop turning the screw immediately, the Handpiece Indicator shows the desired air pressure.



(Fig. 4 AUTO SELECT BLOCK)

(B) FOOT CONTROL (CLESTA TYPE) (FIG.5)

1. DRIVE AIR PEDAL

Handpiece speed can be controlled by Drive Air Pedal.

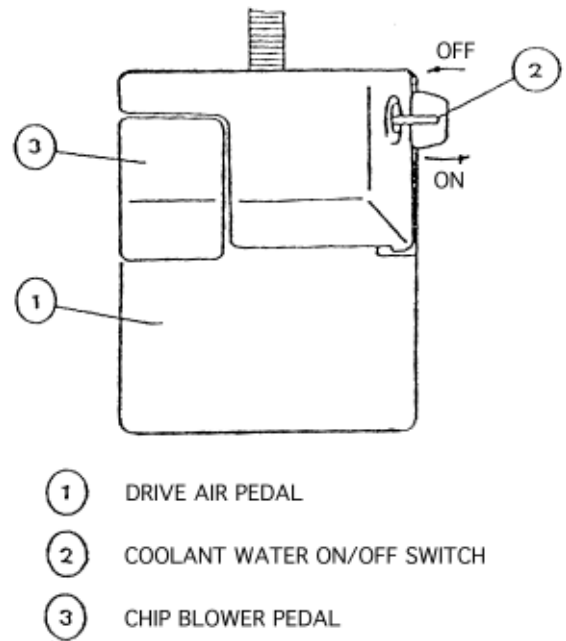
2. COOLANT ON/OFF SWITCH

WET CUTTING This switch On and depress Drive Air Pedal.

DRY CUTTING This switch OFF and depress Drive Air Pedal.

3. CHIP BLOWER PEDAL

Depress Chip Blower Pedal chip air blows without Handpiece Bar turning.



(Fig. CLESTA FOOT CONTROL)

(C) FLUSH OUT SYSTEM

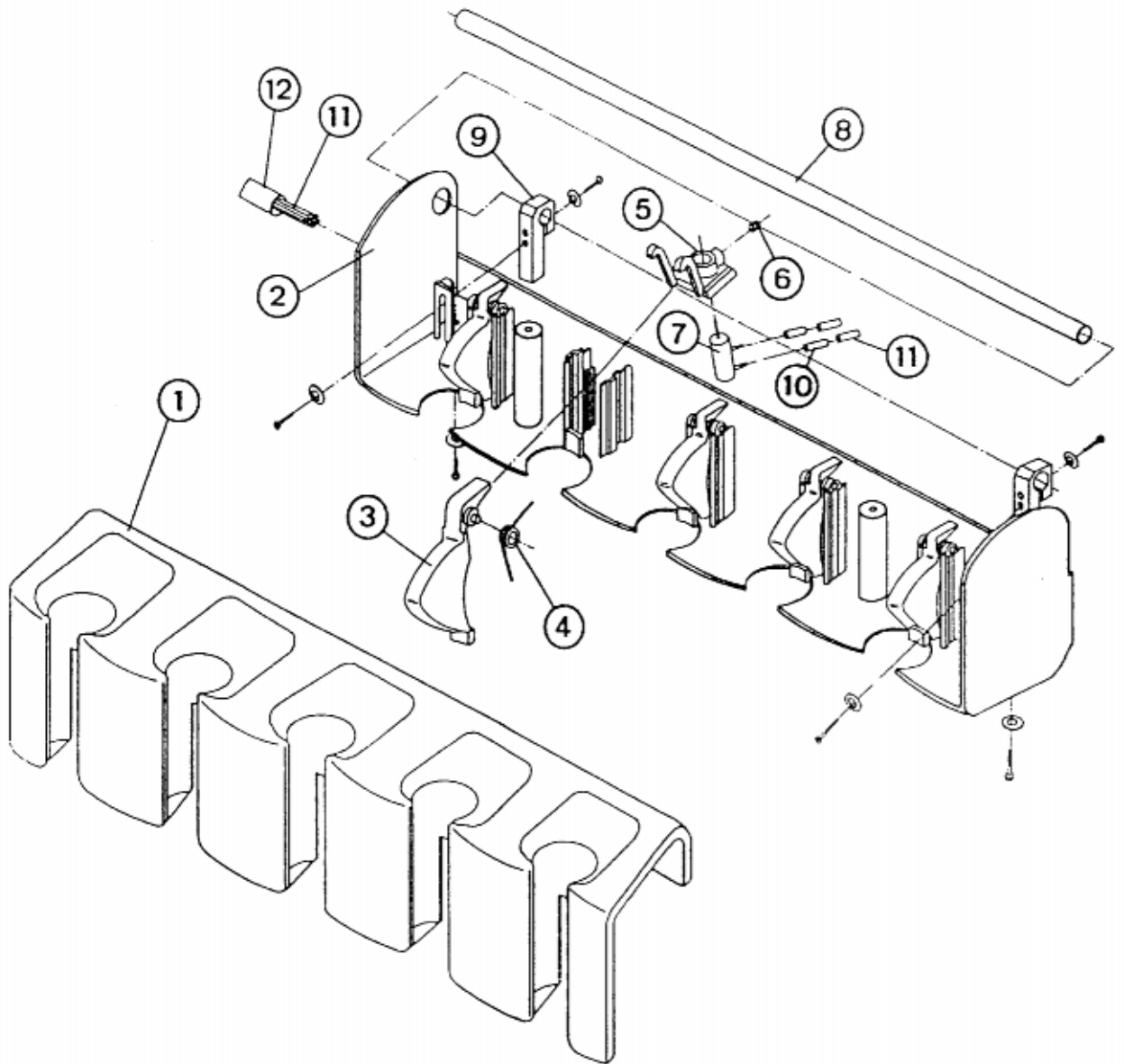
Remove Handpiece from Handpiece Holder and hold Flush Out Switch (fig.2 1) (Dead man type switch), flush out handpiece water.

NOTE: Each handpiece water line has non return valve (check valve) to stop sucking dirty water.

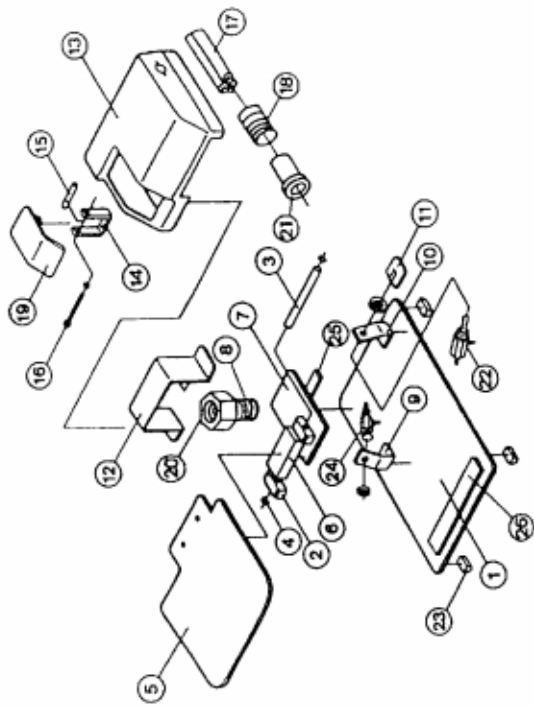
(D) MAINTENANCE

- a) DAILY: Turn off main switch every night or when the unit is not to be used for a long period. This action will prevent accidental water damage.
- b) CLEANING: Painted and plastic surfaces may be cleaned with a damp cloth, mild soap or alcohol as required .
- c) SYRINGE NOZZLE (METAL TYPE) & RUBBER MAT are autoclavable. (135 )

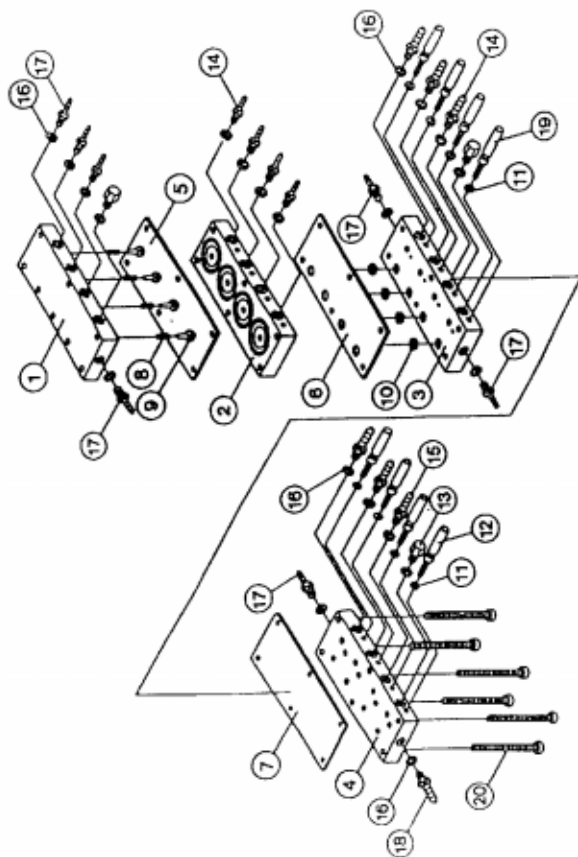
CU-16 HANDPIECE HOLDER SECTION (HOLDER TYPE)



NO.	PARTS NO.	DESCRIPTION	QTY	FACTORY CODE
1	CU-16250	HANDPIECE HOLDER FOR 5 HANDPIECES	1	
2	CU-16260	HANDPIECE HOLDER SHELL FOR 5 HANDPIECES	1	
3	CU-16270	ACTUATOR	5	
4	CU-16280	ACTUATOR SPRING	5	
5	CU-16290	ACTUATOR GUIDE	5	
6	CU-16300	SET SCREW M5-8	3	
7	CU-16310	MICRO PILOT VALVE (N.C. TYPE 1.8)	3	
8	CU-16320	HANDPIECE HOLDER BAR	1	
9	CU-16330	HANDPIECE HOLDER BAR BRACKET	2	
10	CU-16340	SLEEVE 1.8	8	
11	CU-16350	TUBING 1.8	8	
12	CU-16360	COVER HOSE	1	
CU-16	CU-16003	HANDPIECE HOLDER ASS'Y FOR 4 HANDPIECES		
CU-16	CU-16004	HANDPIECE HOLDER ASS'Y FOR 5 HANDPIECES		



NO.	PARTS NO.	DESCRIPTION	QTY	FACTORY CODE
1	CU-22010	BASE	1	
2	CU-22020	BRACKET FOR PEDAL	1	
3	CU-22030	SHAFT	1	
4	CU-22040	E-TYPE	2	
5	CU-22050	DRIVE PEDAL	1	
6	CU-22060	JOINING PLATE	1	
7	CU-22070	METAL PLATE	1	
8	CU-22080	SPRING	1	
9	CU-22090	BRACKET FOR CHIP VALVE	1	
10	CU-22100	BRACKET FOR COOLANT WATER ON/OFF SWITCH	1	
11	CU-22110	COOLANT WATER ON/OFF SWITCH COVER	1	
12	CU-22120	BRACKET FOR DRIVE AIR RD3UL7CR (A)	1	
13	CU-22130	COVER	1	
14	CU-22140	BRACKET FOR CHIP PEDAL	1	
15	CU-22150	SHAFT	1	
16	CU-22160	SCREW W/ LOCK WASHER	1	
17	CU-22170	HOSE	1	
18	CU-22180	HOSE COVER	1	
19	CU-22190	CHIP PEDAL	1	
20	CU-22201	DRIVE AIR REGULATOR (A)	1	
21	CU-22211	FOOT CONTROL HOSE SLEEVE	1	
22	CU-22220	COOLANT WATER ON/OFF VALVE	1	
23	CU-22230	RUBBER CUSHION	4	
24	CU-22240	CHIP VALVE (3P VALVE)	1	
25	CU-22250	PEDAL CUSHION RUBBER (A)	1	
26	CU-22260	PEDAL CUSHION RUBBER (B)	1	
CU-22	CU-22002	FOOT CONTROL ASSY		



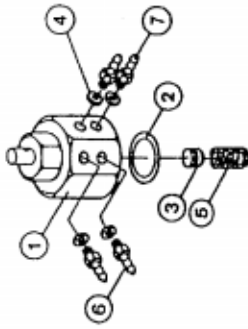
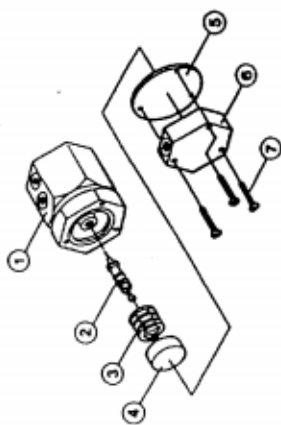
NO.	PARTS NO.	DESCRIPTION	QTY	FACTORY CODE
1	NU-69010	BLOCK (WATER)	1	
2	KU-69020	BLOCK (PILOT AIR)	1	
3	PTU-69030	BLOCK (CHIP AIR)	1	
4	NU-69040	BLOCK (DRIVE AIR)	1	
5	NU-69050	DIAPHRAGM (WATER)	1	
6	NU-69060	DIAPHRAGM (PILOT AIR)	1	
7	NU-69070	DIAPHRAGM (DRIVE AIR)	1	
8	NU-69080	POPPET SPRING	4	
9	NU-69090	POPPET	4	
10	NU-69100	O-RING P3	4	
11	NU-69110	O-RING 4-2-1	8	
12	NU-69120	DRIVE AIR ADJUSTMENT SCREW	4	
13	NU-69130	PLUG M5	3	
14	NU-69140	BARB FITTING 1.8	7	
15	NU-69150	BARB FITTING 3.7	3	
16	NU-69160	NYLON WASHER M5	21	
17	NU-69170	BARB FITTING 1/8	7	
18	W-69180	BARB FITTING 1/4	1	
19	NU-69190	CHIP AIR ADJUSTMENT SCREW	4	
20	NU-69200	SCREW M4-40	6	
NU-69	NU-69004	AM-SELECT VALVE ASSY FOR 4 -PIECES (HOLDER TYPE)		
NU-69	NU-69005	AUTO-SELECT VALVE ASSY FOR 5 HANDPIECES (HOLDER TYPE)		
NU-69	NU-69006	AUTO-SELECT VALVE ASSY FOR GERMANY TYPE (HOLDER TYPE)		

NU-6 5

PULL BACK VALVE

NU - 57

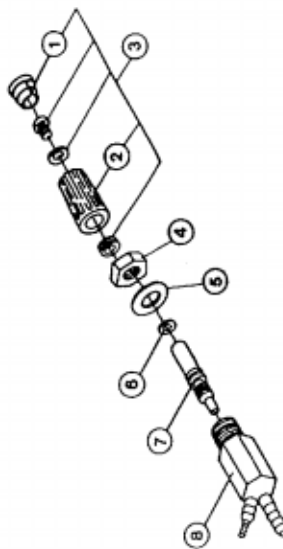
DRIVE AIR REGULATOR



NO.	PARTS NO.	DESCRIPTION	QTY	FACTORY CODE	NO.	PARTS NO.	DESCRIPTION	QTY	FACTORY CODE
1	NU-65010	BODY	1		1	NU-57011	BODY	1	
2	NU-65020	TIRE VALVE B9000	1		2	NU-57020	O-RING P16	1	
3	NU-65030	SPRING	1		3	NU-57031	POPPET & HOLDER	1	
9	NU-65040	METAL CAP	1		4	NU-57041	NYLON WASHER M5	4	
5	NU-65050	DIAPHRAGM	1		5	NU-57050	SPRING	1	
6	NU-65060	VALVE CAP	1		6	NU-57060	BARB FITTING 1/8	2	
7	NU-65070	SCREW M3-16	1		7	NU-57070	BARB FI171W 1/4	2	
NU-65	NU-65001	PULL-BACK VALVE ASSY	3		NU-57	NU-57002	DRIVE AIR REGULATOR ASSY	2	

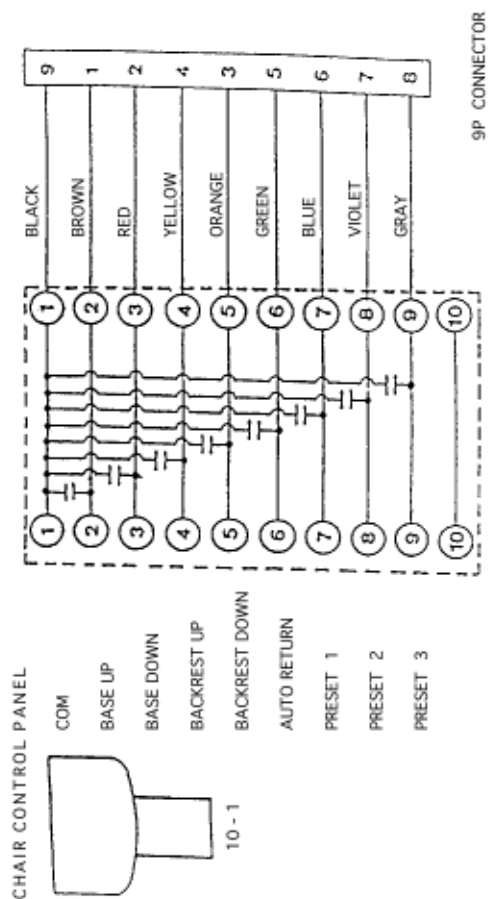
NU-6 6

MINI-NEEDLE VALVE

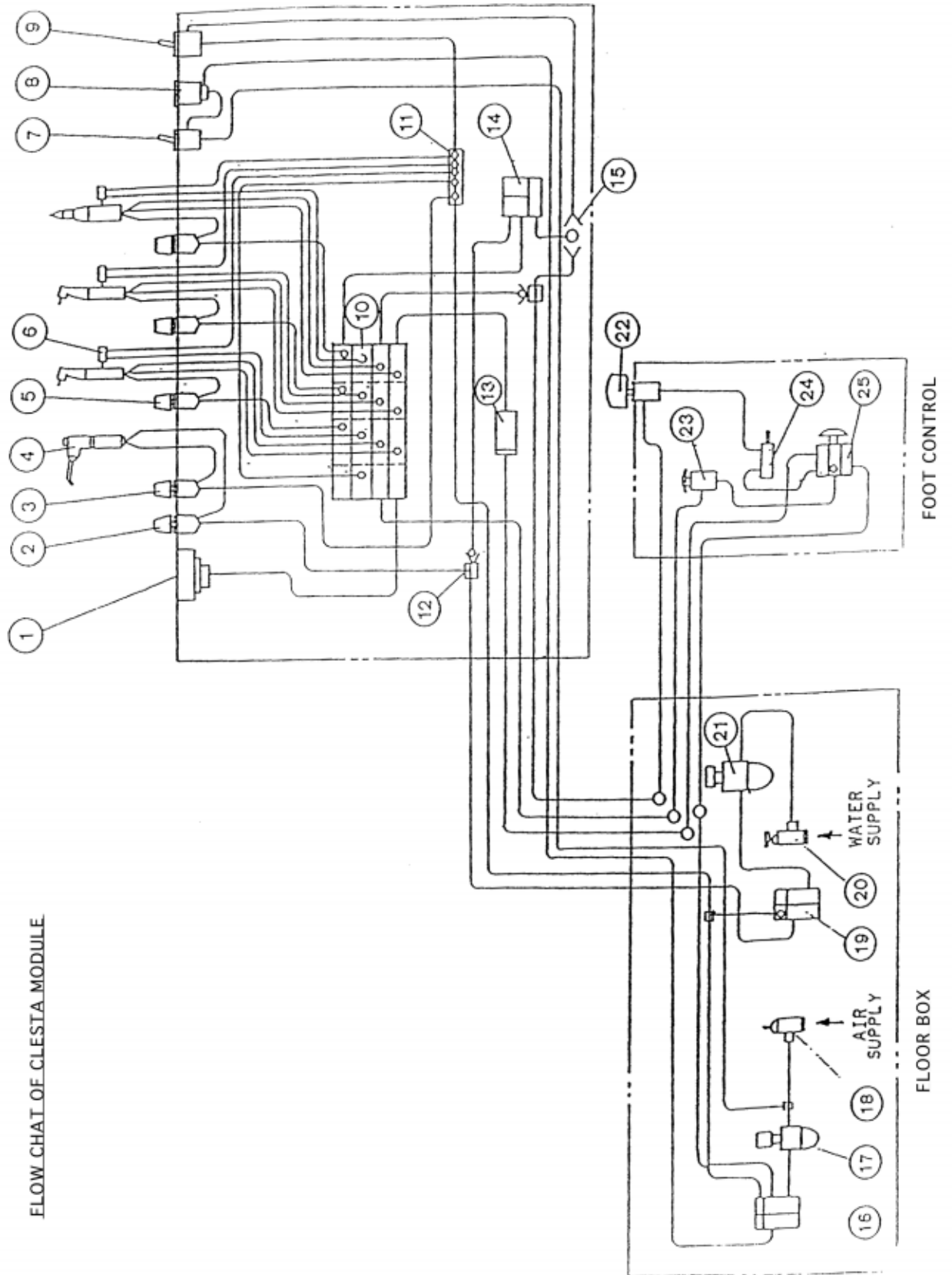


NO.	PARTS NO.	DESCRIPTION	QTY	FACTORY CODE
1	NU-66011	BLUE CAP	1	
1	NU-66012	YELLOW CAP	1	
2	NU-66200	KNOB	1	
3	NU-66210	KNOB ASSY WITH YELLOW CAP	1	
3	NU-66220	KNOB ASSY WITH BLUE CAP	1	
4	NU-66230	NUT FOR MINI-NEEDLE VALVE	1	
5	NU-66240	WASHER FOR MINI-NEEDLE VALVE	1	
6	NU-66060	O-RING 5-3-1	1	
7	NU-66070	VALVE SHAFT	1	
8	NU-66081	VALVE BODY	1	
NU-66	NU-66003	MINI-NEEDLE VALVE ASSY WITH YELLOW CAP	1	
NU-66	NU-66004	MINI-NEEDLE VALVE ASSY WITH BLUE CAP	1	

CLESTA MODULE WIRING DIAGRAM



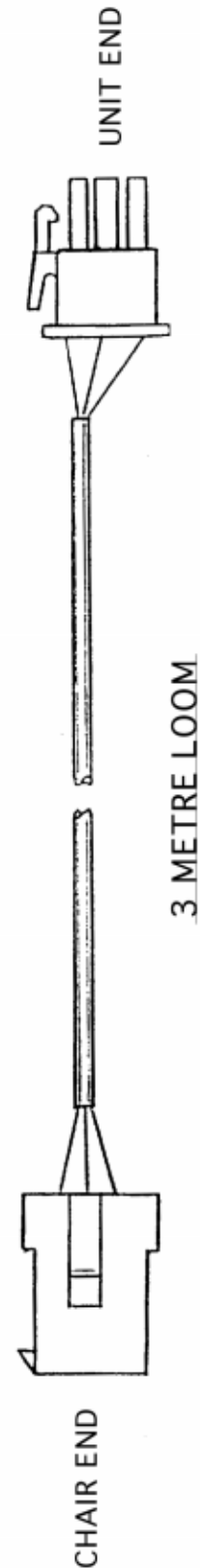
FLOW CHART OF CLESTA MODULE



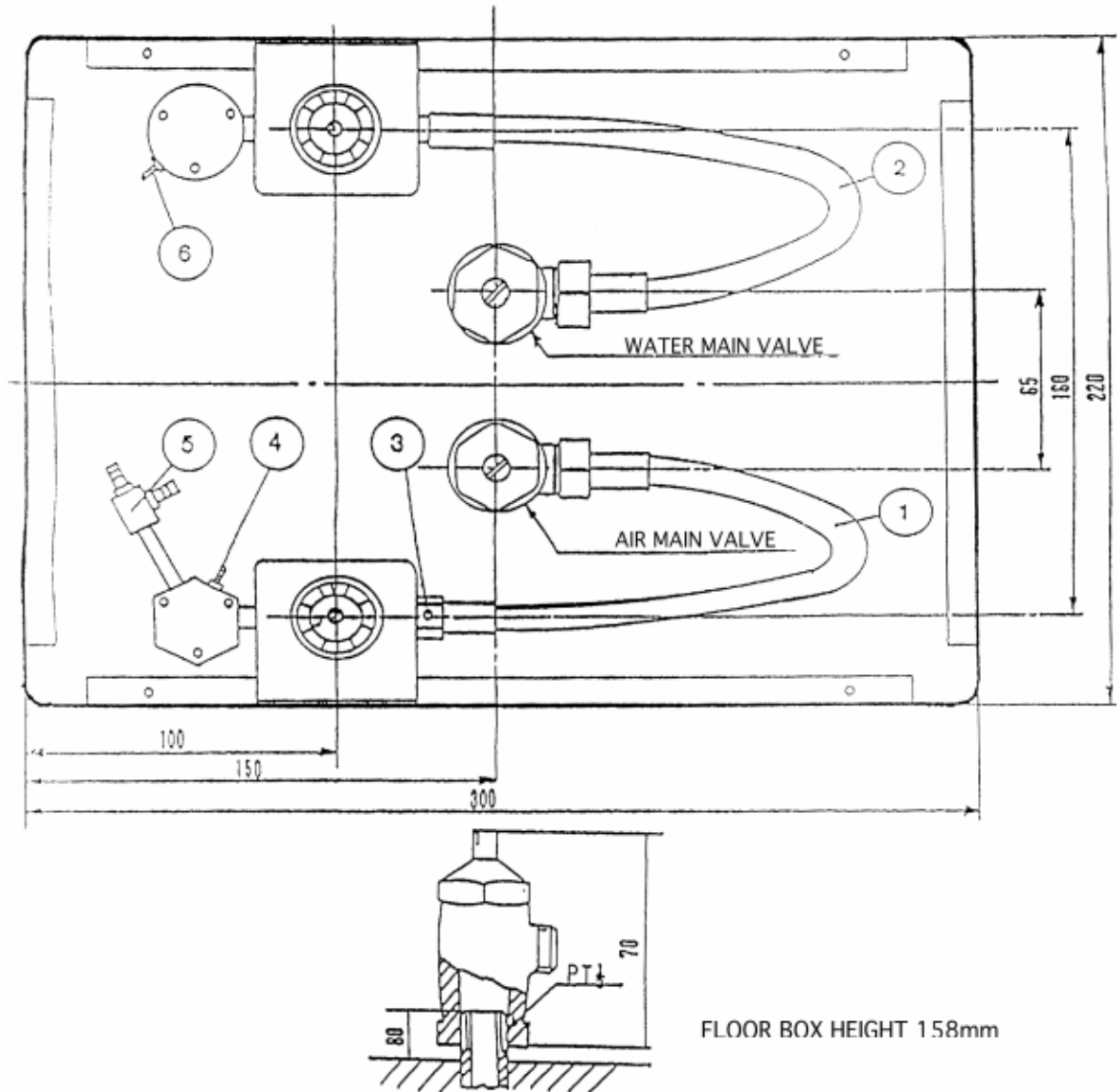


## PARTS LIST

INDEX NO.	DESCRIPTION	PARTS NO.
1	PRESSURE GAUGE ASSEMBLY	
2	NEEDLE VALVE (SMALL) FOR SYRINGE WATER	400-002
3	NEEDLE VALVE (SMALL) FOR SYRINGE AIR	400-002
4	3 WAY SYRINGE ASSEMBLY	350-050
	3 WAY SYRINGE TIP	350-051
	3 WAY SYRINGE TIRE VALVE	350-052
	3 WAY SYRINGE BUTTON W & A	350-053
	3 WAY SYRINGE TUBE (COILED)	350-055
	3 WAY SYRINGE TUBE (STRAIGHT)	350-054
5	NEEDLE VALVE (SMALL) FOR HANDPIECE WATER	400-002
6	MICRO PILOT VALVE (N.O)	350-113
7	TOGGLE ON/OFF VALVE (MASTER SWITCH)	350-114
8	INDICATOR FOR MASTER SWITCH	
9	(FLUSH OUT SWITCH)	
10	AUTO SELECT BLOCK ASSEMBLY	350-097
	DIAPHRAGM SET FOR AUTO SELECT BLOCK	350-0971
	VALVE & SPRING FOR A.S.B. WATER	350-0972
11	AIR MANIFOLD	
12	CHECK VALVE (MINI)	350-079
	TEE JOINT	350-073
13	INLINE FILTER ASSEMBLY	350-096
14	PULL BACK VALVE	350-047
	DIAPHRAGM FOR PULL BACK VALVE	350-0472
	PULL BACK VALVE TIRE VALVE	350-052
15	SHUTTLE VALVE ASSEMBLY	350-039
	FLOOR BOX SECTION	
16	MASTER VALVE ASSEMBLY (AIR)	350-010
	DIAPHRAGM FOR MASTER VALVE	350-0102
	VALVE FOR MASTER VALVE	350-0101
17	AIR FILTER REGULATOR (MODULE)	
	AIR FILTER ELEMENT(MODULE)	
	AIR FILTER BOWL (MODULE)	
	DIAPHRAGM FOR AIR FILTER REGULATOR	
18	MAIN VALVE ASSEMBLY (AIR)	350-001
19	MASTER VALVE ASSEMBLY (WATER)	350-010
20	MAIN VALVE ASSEMBLY (WATER)	350-001
21	WATER FILTER REGULATOR (MODULE)	
	WATER FILTER ELEMENT (MODULE)	
	WATER FILTER BOWL (MODULE)	
	FOOT CONTROL SECTION	
22	COOLANT WATER ON/OFF SWITCH	
23	3P VALVE ASSEMBLY FOR CHIP AIR	350-046
24	CHIP BLOWER VALVE	
25	DRIVE AIR REGULATOR FOR FOOT CONTROL	



PLUMBING LAYOUT FOR CLESTA MODULE FLOOR BOX



<u>MODULE TUBE</u>	<u>SIZE</u>	<u>COLOUR</u>	<u>MA</u>
MAIN AIR SUPPLY TUBE	1/2	YELLOW	
MAIN WATER SUPPLY TUBE	1/2	BLUE	
PILOT AIR SUPPLY TUBE	1/8	ORANGE	1
PILOT AIR RETURN TUBE	1/8	BROWN	2
AIR SUPPLY TUBE	1/4	YELLOW	
WATER SUPPLY TUBE	1/8	BLUE	
FOOT CONTROL TUBE (CABINET DELIVERY TYPE)			
AIR SUPPLY TUBE	1/4	YELLOW	
H/P WATER TUBE	1/8	GREY	
CHIP AIR TUBE	1/8	YELLOW	
DRIVE AIR TUBE	1/4	RED	



TAKARA BELMONT CO., LTD.  
1-1, 2-Chome, Higashi-shinsaibashi,  
Chuo-ku, Osaka, Japan

## DECLARATION OF CONFORMITY

**CE CONFORMITY**

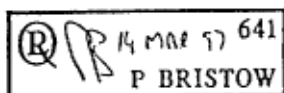
We hereby declare that the product listed below complies with the essential requirements of the Medical Device Directive, 93/42/EEC.

The product has been designed and manufactured in accordance with the international standards IEC601-1:1988 including A1:91 and A2:95 and IEC601-1-2:1993.

Our quality system has been certified to MDD ANNEX II & EN46001:1996 (Certificate No.948368) by Notified Body, LLOYD'S REGISTER QUALITY ASSURANCE LTD. (No.0088).

DENTAL UNIT (CLASS IIa)

CLESTA



Representative in EU:  
Takara Belmont(U.K.)Ltd.  
Belmont House  
One St. Andrews Way, Bow,  
London E3 3PA U.K.  
Tel: (44) 171 515 0333  
Fax: (44) 171 987 3596

Signature:

Date: 14th March, 1997

K. YOSHIKAWA  
MANAGING DIRECTOR  
PRODUCTION DIV.