

DENTAL LIGHT

048

Installation Instructions



 **Belmont**

TABLE OF CONTENTS

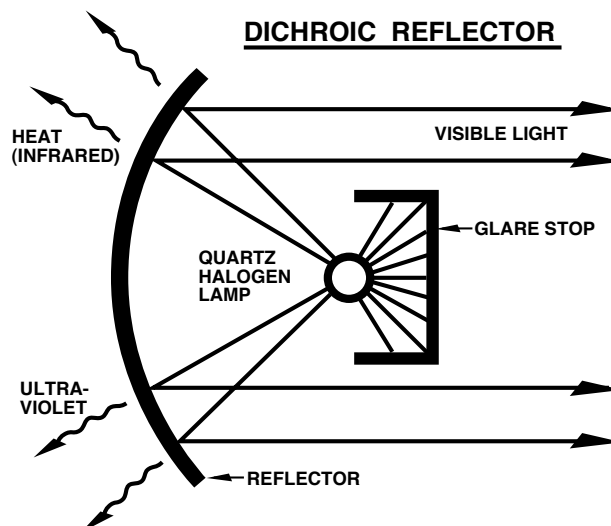
[1] SPECIFICATIONS	2
[2] UNIT MOUNT TYPE.....	3
[3] CEILING MOUNT TYPE	4
[4] TRACK MOUNT TYPE.....	5-6
[5] WIRING DIAGRAM.....	7-8

The **Belmont** lights incorporate the latest advances in dental lighting technology. The light is color matched to natural daylight, is easily cleaned, has a dual intensity on-off control and smooth easy positioning.

[1] SPECIFICATIONS

Rated Voltage	AC 220/230/240V
Output Voltage	12V High, 10.5V Low
Power Output	55W High, 42W Low
Bulb Type.....	Tungsten Halogen Type JA 12V-55W
Focal Distance	725mm
Light Output.....	28,000 Lux High 18,000 Lux Low
Color Temperature	3,700 Kelvin High 3,600 Kelvin Low
Light Pattern	200 x 80 at 725mm

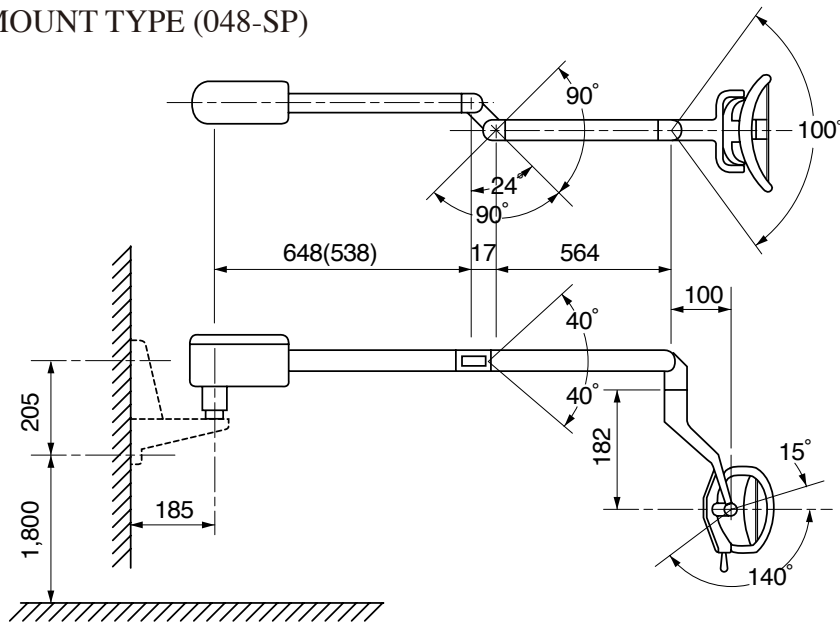
The Dichroic Reflector allows heat (infrared) and ultraviolet to pass harmlessly through the back of the lamp housing. Only white light is focused on the patient for reduced eyestrain and comfort.



[2] UNIT MOUNT TYPE (048-U, 048-SP, 048-W)

2-1. DIMENSIONS

() : SP MOUNT TYPE (048-SP)



2-2. INSTALLATION INSTRUCTIONS

- 1) Unpack light.
- 2) Mount on pole guiding wire through (a pull cord may be helpful for this operation).
- 3) Plug in wire end to proper electrical power source.
- 4) Remove arm lock screw (save for possible future shipment). (See Figure 1.)
- 5) To convert to left-hand operation (See Figure 2.):
 - 5-1) Remove small screw bottom H-bracket (as shown).
 - 5-2) Rotate H-bracket to other position and reinsert screw (loosen upper & lower countersink screws to help in moving bracket).

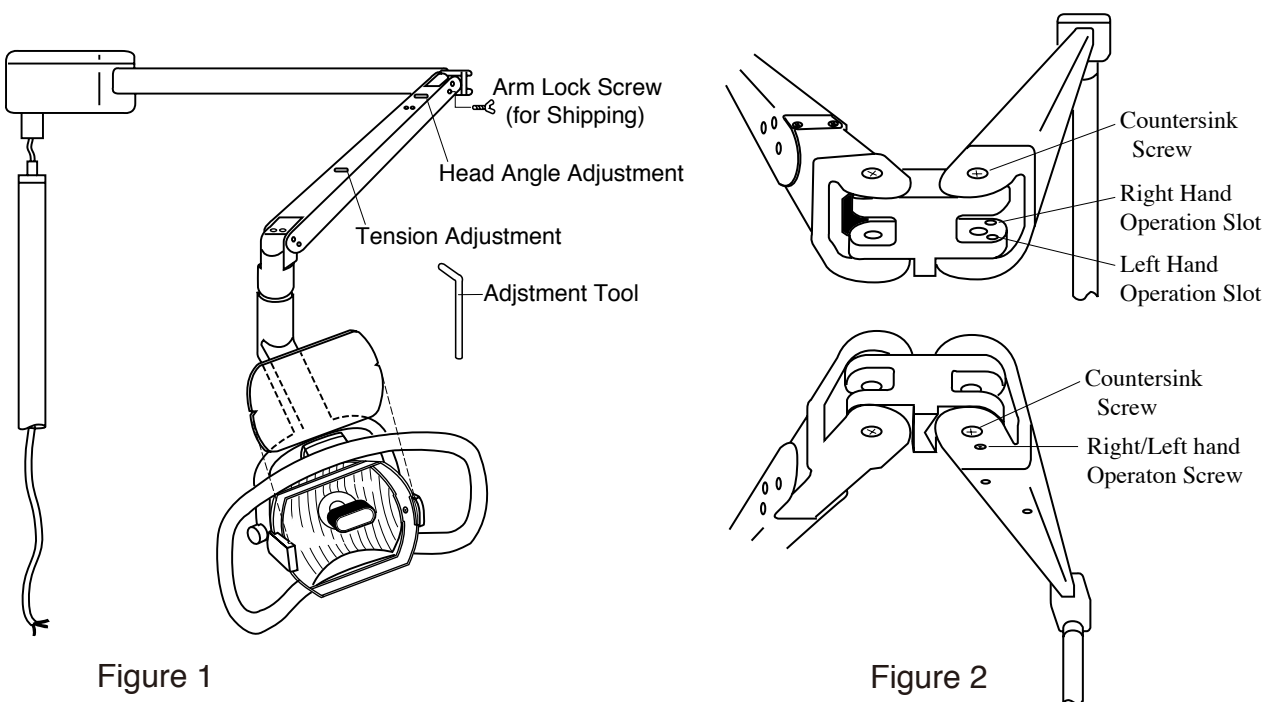
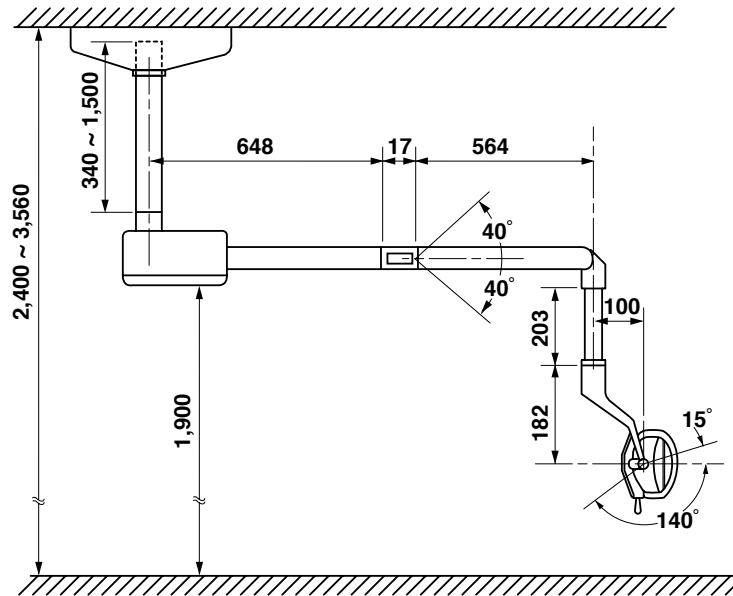


Figure 1

Figure 2

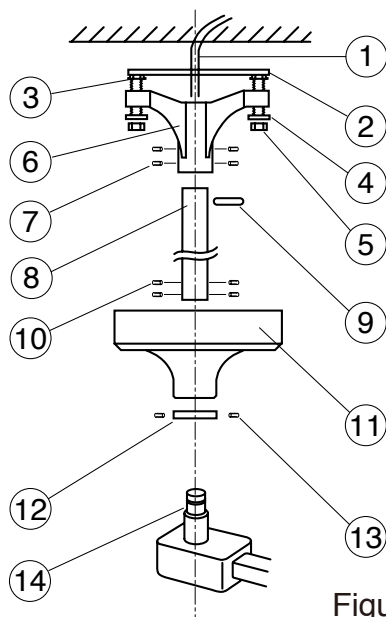
[3]CEILING MOUNT TYPE (048-C)

3-1. DIMENSIONS



3-2. INSTALLATION INSTRUCTIONS

- 1) Lead out the power supply cable from the ceiling where the ceiling light is mounted.
- 2) Run the power supply cable through the mounting plate and attach the mounting plate to ceiling.
- 3) Insert the suspension tube to the ceiling flange and secure them with roll pin.
- 4) Run the power supply cable through the ceiling flange and suspension tube.
- 5) Insert adjusting nuts between mounting plate and ceiling flange, then fix the flange with 4 washers and nuts.
- 6) Make sure that suspension tube is perpendicular.
- 7) Slide the flange cover on the suspension tube up to the mounting plate. And hold it.
- 8) Slide the cover ring up to the cover - flat surface of ring must be flash against cover and tighten the 3 socket screws.
- 9) Connect wires of the power supply cable to the wires from transformer.
- 10) Insert the transformer shaft to the suspension tube and tighten the 4 socket screws.

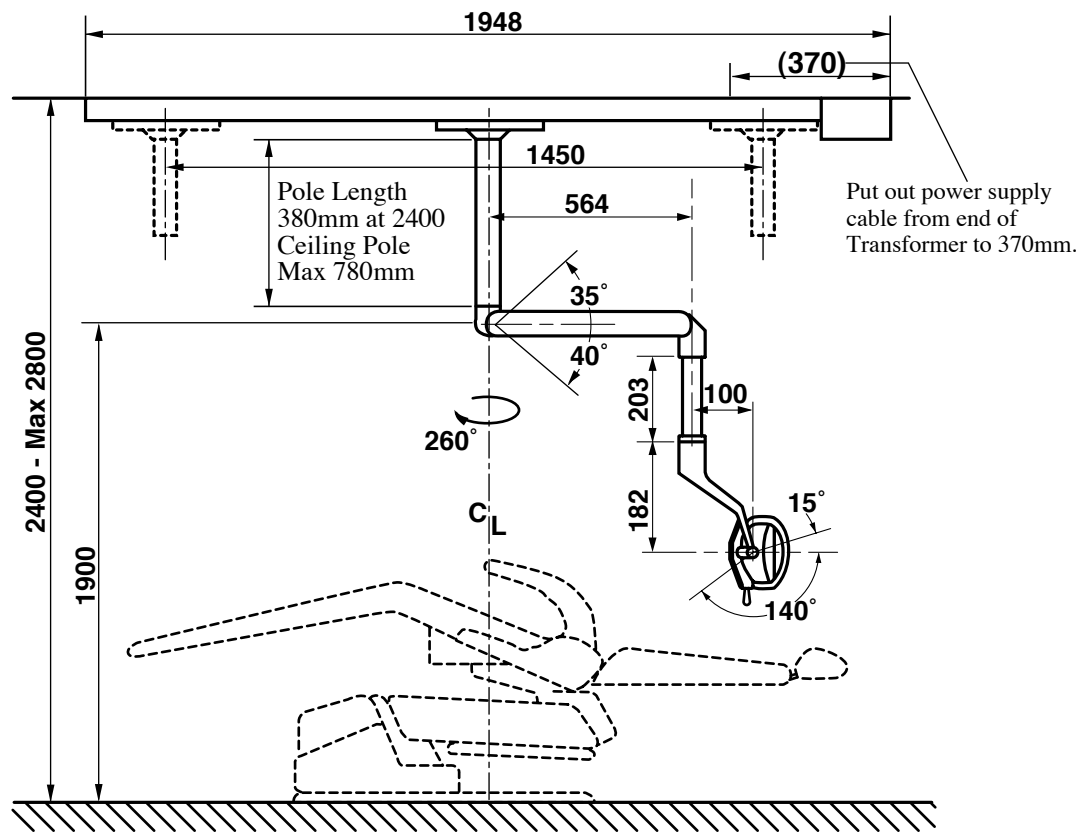


- (1) Power Supply Cable
- (2) Mounting Plate
- (3) Adjusting Nut
- (4) Washer
- (5) Nut
- (6) Ceiling Flange
- (7) Socket Screw for Ceiling Flange
- (8) Suspension Tube
- (9) Roll Pin
- (10) Socket Screw for Arm
- (11) Flange Cover
- (12) Cover Ring
- (13) Socket Screw for Ring
- (14) Transformer Shaft

Figure 3

[4] TRACK LIGHT (048-T)

4-1. DIMENSIONS



4-2. INSTALLATION INSTRUCTIONS (See Figure 4,5.)

- 1) Referring to the dimensional drawing above, decide the exact location where the track light is installed.
- 2) Prepare the power supply cable in the ceiling and lead it out about 120mm from the ceiling (at 370mm from transformer end).
- 3) Install the track to the ceiling with 6 mounting bolts (Ⓐ of Figure 4).
- 4) Connect power supply cable to the terminal block Ⓒ.
- 5) Mount the trolley onto track from the end of track closer to power supply cable.
- 6) Install two rubber bumpers Ⓓ on track.
- 7) Run the cable from trolley through the track via pulley and secure the cable by plastic wire clips Ⓕ.
- 8) Check if the trolley travels smooth through the track. It is factory adjusted to provide smooth effortless travel, without play. However, rollers can be readjusted if necessary. Loosen set screw and adjust socket cap screw to vary rollers clearance. (Figure 5.)
- 9) Attach transformer box to the track with two screws Ⓖ.
 * Note: Transformer Box is packed in with main light.
- 10) Connect the cable from transformer box, one with pigtail leads to the corresponding power line wires at terminal block Ⓒ, and the other with connector to the cable from trolley at connector Ⓗ.
- 11) Attach bottom cover by sliding into the grooves of track from free end. Be sure that mount hook Ⓘ to engage with Z-bracket Ⓣ of track.
- 12) Attach end-cap to the track with two screws (M5).

Figure 4

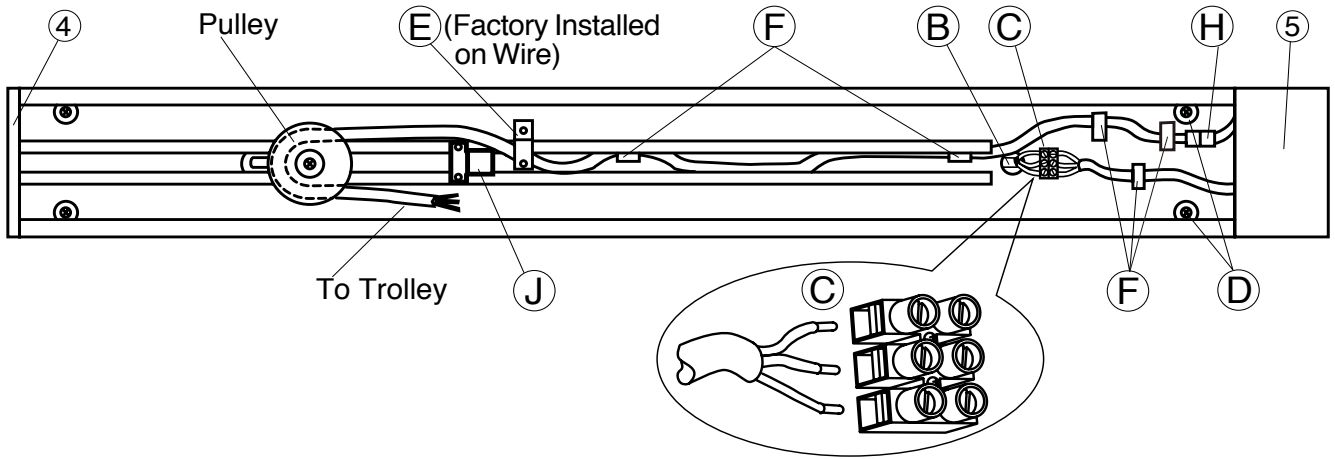
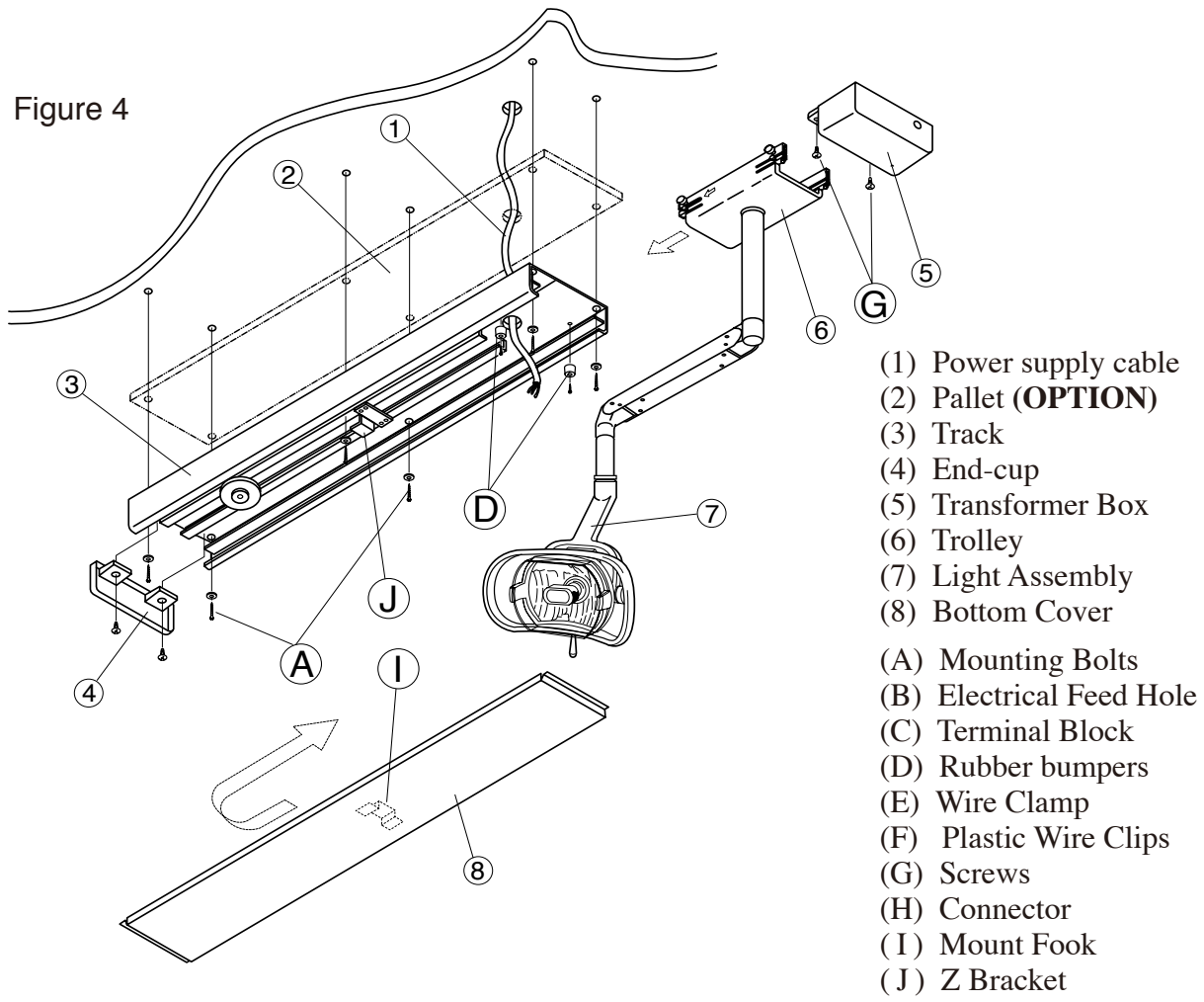
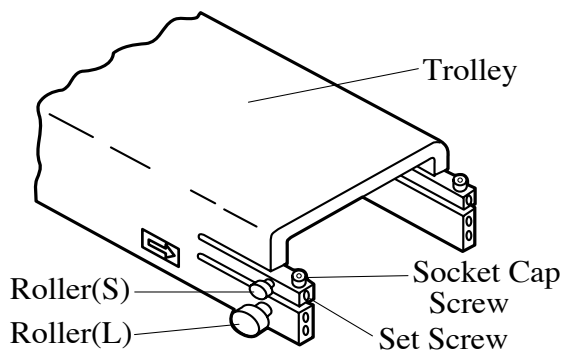
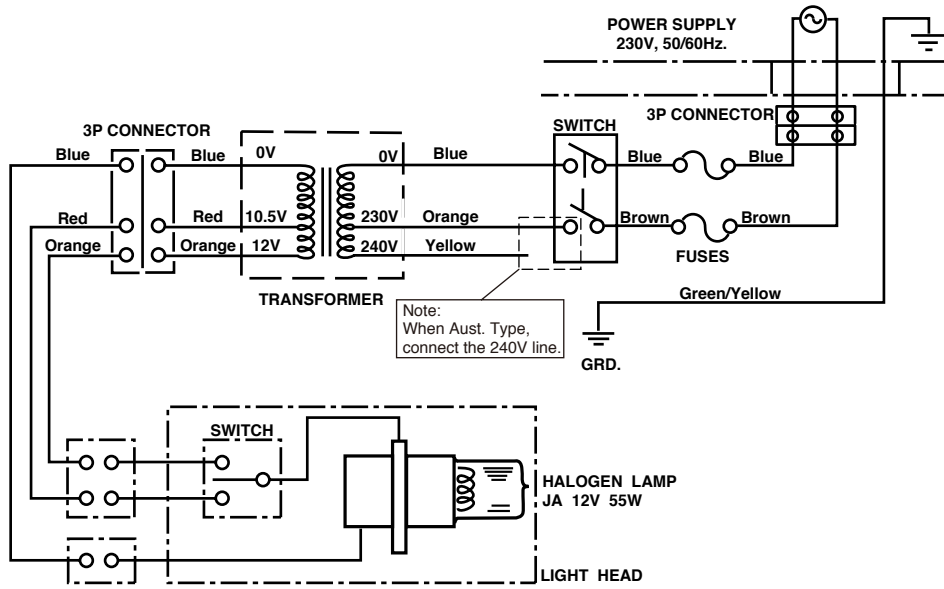


Figure 5

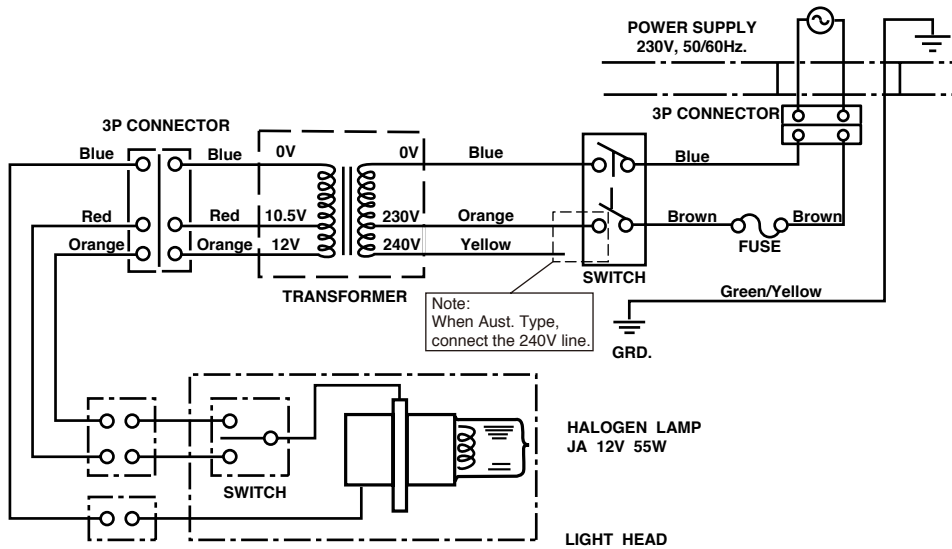


[5] WIRING DIAGRAM

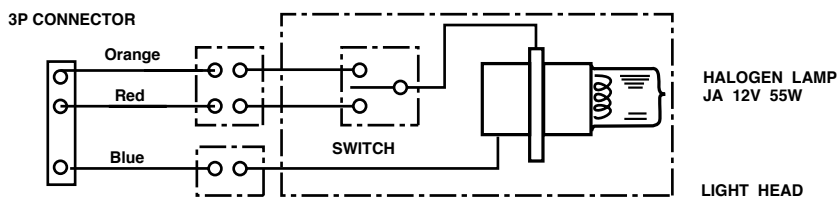
1. Unit Mount Type



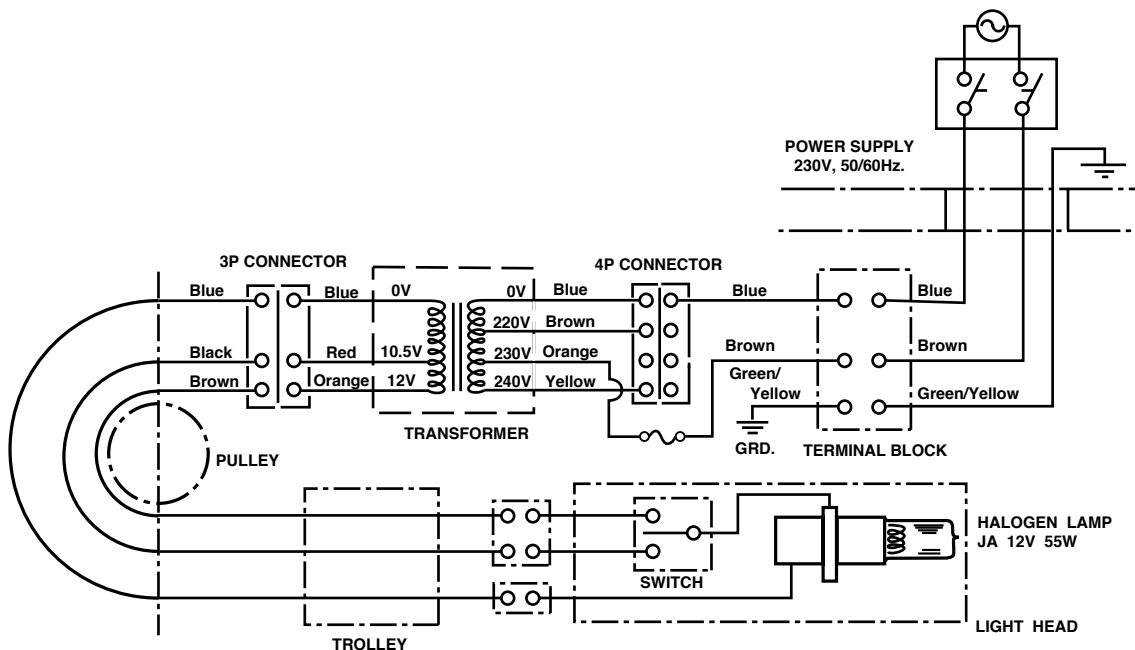
2. Ceiling Mount Type



3. SP Mount Type



4. Track Mount Type



⚠ IMPORTANT

After installation is completed, check all the bolts, screws and fasteners to confirm that they are securely fastened.

Belmont



TAKARA BELMONT CORPORATION

1-1, 2-Chome, Higashi-shinsaibashi, Chuo-ku, Osaka, Japan

TEL. : (06) 6213-5945

FAX. : (06) 6212-3680

Book Number: **CASN64A0**

Printed in Japan 0807.MA